

Installation Guide

Flex Patch Panel mounting on 19" racks

BELDEN

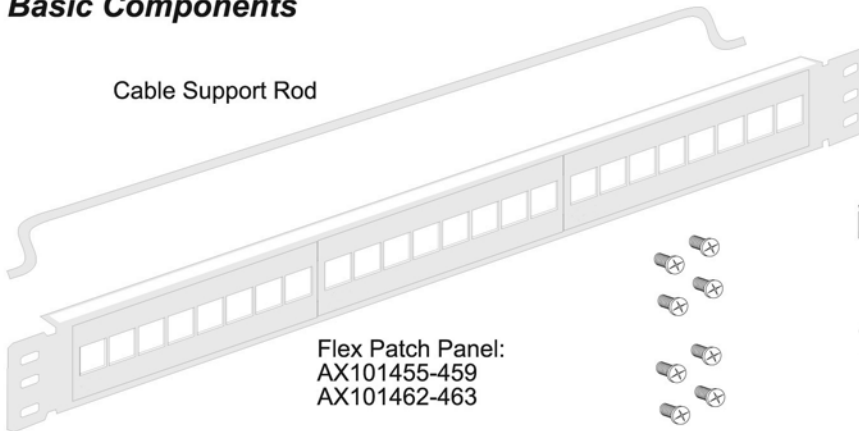
Version 02.00 2007 PX103340

1 of 2 pages

Flex Patch Panel

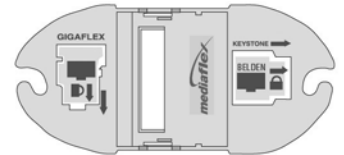
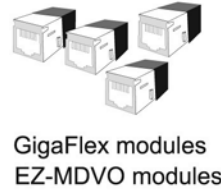
Basic Components

Select the required components to your workplan
(Typical items shown below)



Jack Types

Special Tools



Reference Documents

- GigaFlex: PX103329
- EZ-MDVO: PX102753

Standard Tools

- Phillips screwdriver
- Cable stripper
- Wire stripper

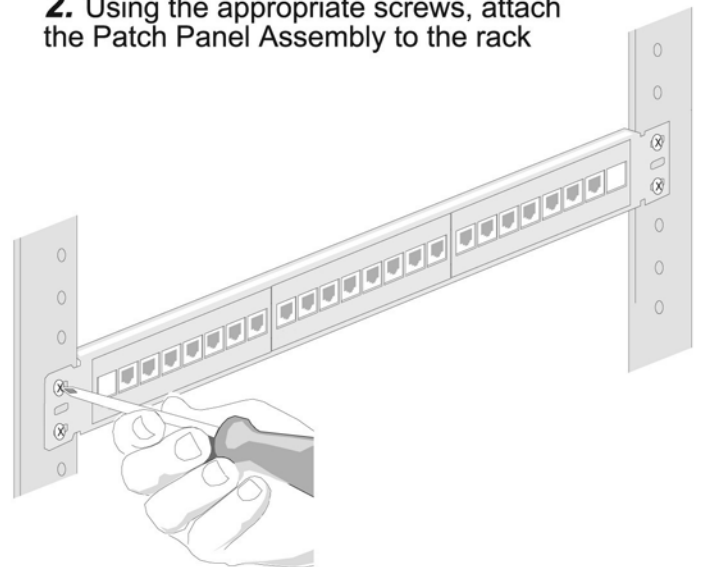
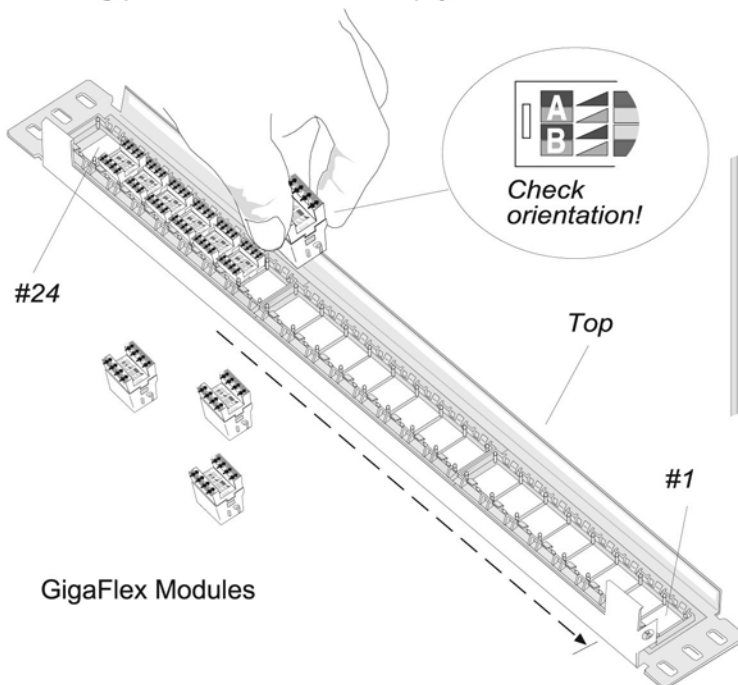
Please Note: These instructions are specific to installing GigaFlex Modules!
Refer to the documents above for **full details** on installing EZ-MDVO and GigaFlex Modules!

Assembling Modules

Attaching the Patch Panel Assembly to a 19" Rack

1. Position the Patch Panel on a flat surface and insert modules on rear side, leaving positions #1 & #24 empty

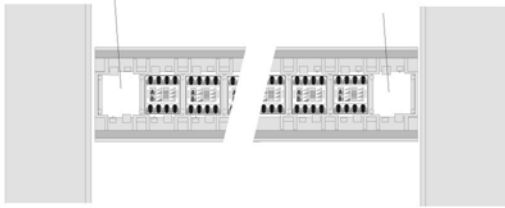
2. Using the appropriate screws, attach the Patch Panel Assembly to the rack



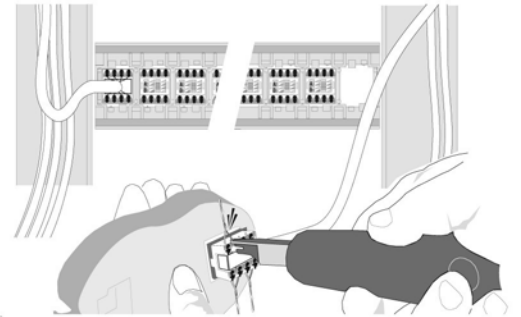
(10 X 32 screws and
12 X 24 screws supplied)

3. Module assemblies for #1 and #24 positions are made using an Termination Station, or on a flat surface.

Position #24 Position #1

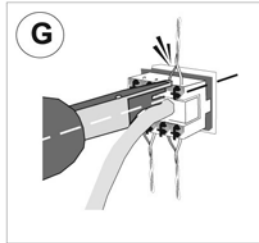
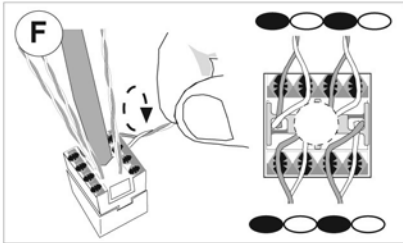
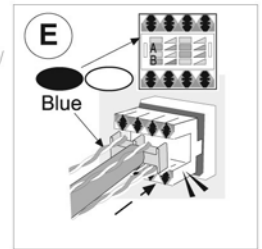
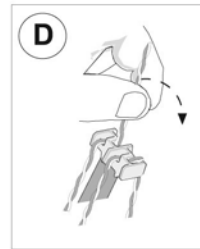
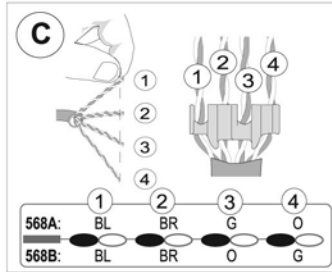
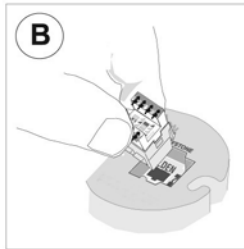
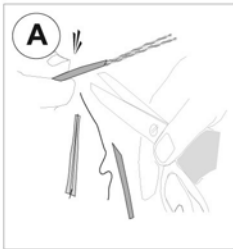


4. Complete the #1 and the #24 module assemblies, (C to G below), and snap into their positions in the panel.

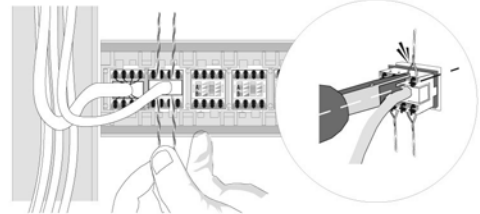


A. Prepare #1 & #24 cables for connecting.

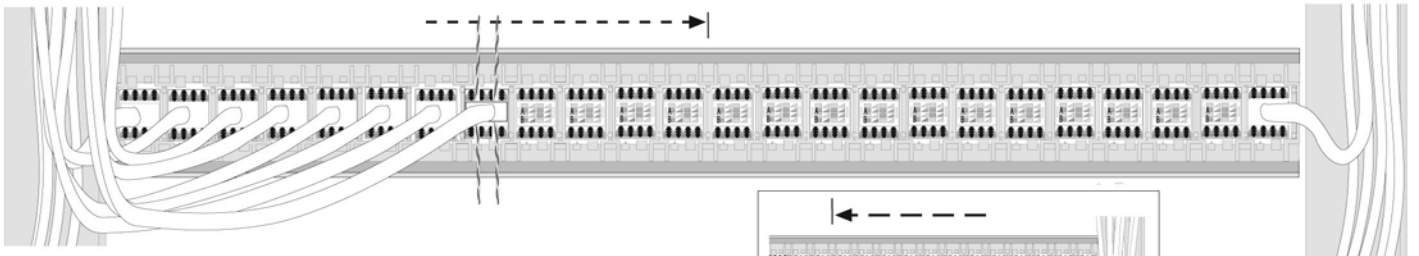
B. Position a module in the Termination Station.



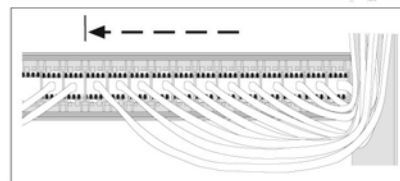
5. Wire the #2 module, and terminate on the panel!



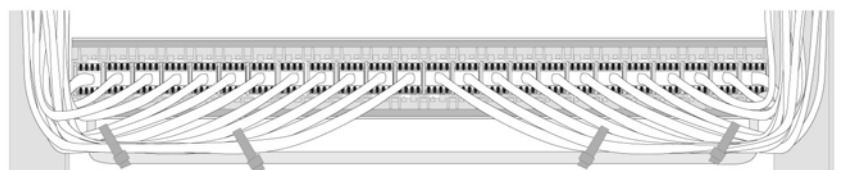
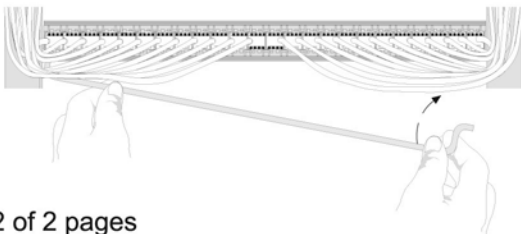
6. Continue assembling the left side, in this sequence, to the center of the panel.



7. Repeat the assembly sequence for the right side, moving inward to the center of the panel.



8. Guide the cable support rod under the cables, and attach in the holes in the patch panel.



A completed Flex Patch Panel Assembly