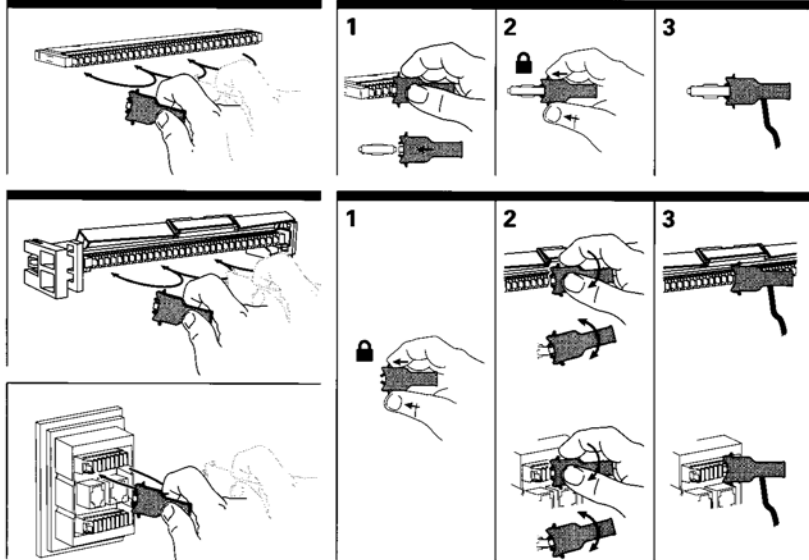


BIX
Essai "lecture rapide"
"Touch & Go" Testing

SR LISTED 3369 HOMOLOGUÉ
Communication Circuit
Accessories
Accessoires - Circuit
de télécommunication

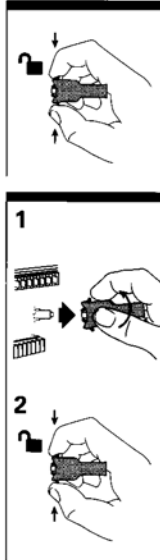
QTBI 17
Essai "enclenché"
"Locked on" Testing



* BIX is a trademark of Belden, Inc. / BIX est une marque de commerce de Belden, Inc.

BELDEN

Retrait
Removal

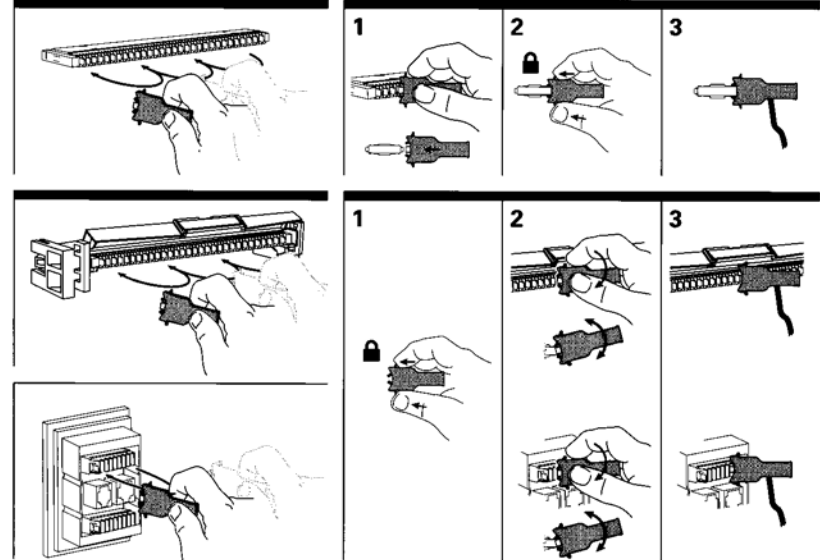


PO712487 Version A

BIX
Essai "lecture rapide"
"Touch & Go" Testing

SR LISTED 3369 HOMOLOGUÉ
Communication Circuit
Accessories
Accessoires - Circuit
de télécommunication

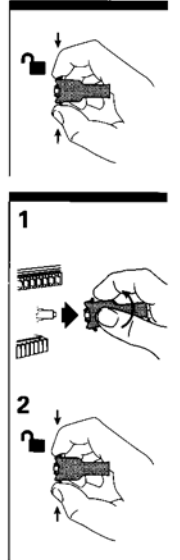
QTBI 17
Essai "enclenché"
"Locked on" Testing



* BIX is a trademark of Belden, Inc. / BIX est une marque de commerce de Belden, Inc.

BELDEN

Retrait
Removal

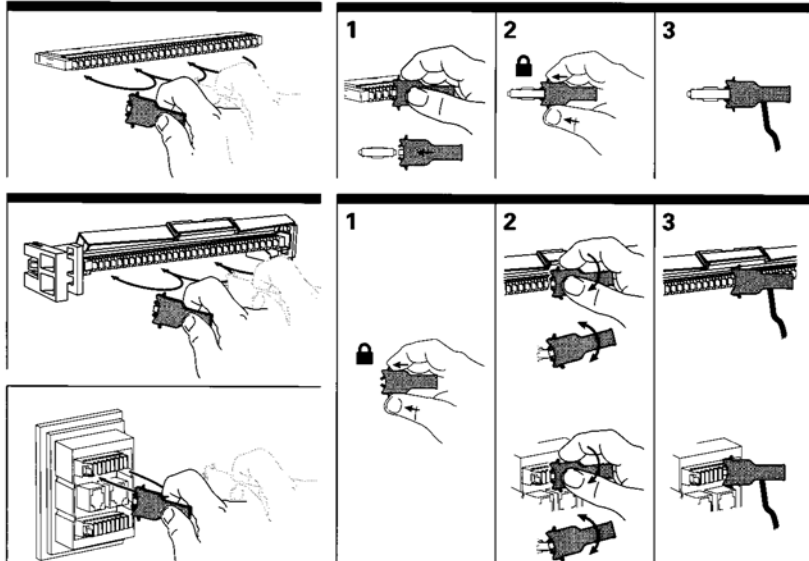


PO712487 Version A

BIX
Essai "lecture rapide"
"Touch & Go" Testing

SR LISTED 3369 HOMOLOGUÉ
Communication Circuit
Accessories
Accessoires - Circuit
de télécommunication

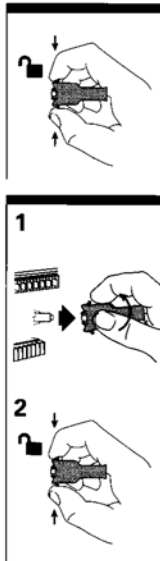
QTBI 17
Essai "enclenché"
"Locked on" Testing



* BIX is a trademark of Belden, Inc. / BIX est une marque de commerce de Belden, Inc.

BELDEN

Retrait
Removal

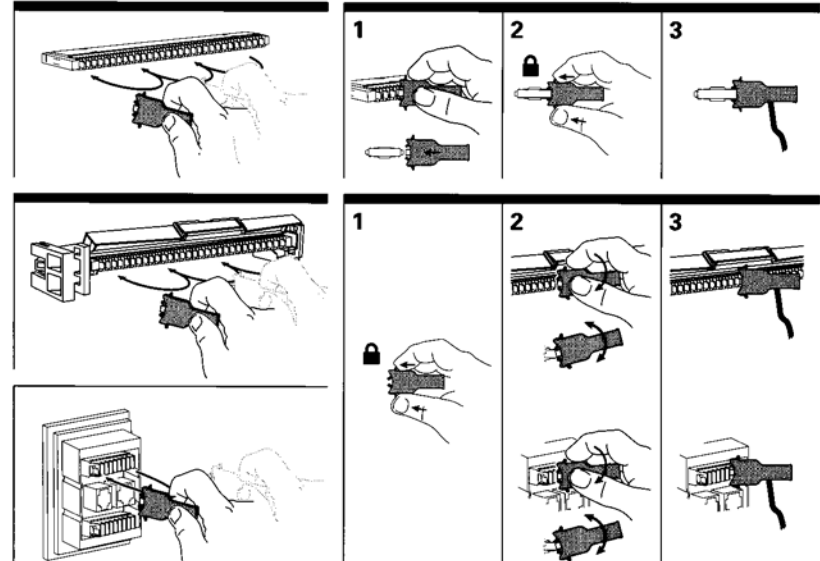


PO712487 Version A

BIX
Essai "lecture rapide"
"Touch & Go" Testing

SR LISTED 3369 HOMOLOGUÉ
Communication Circuit
Accessories
Accessoires - Circuit
de télécommunication

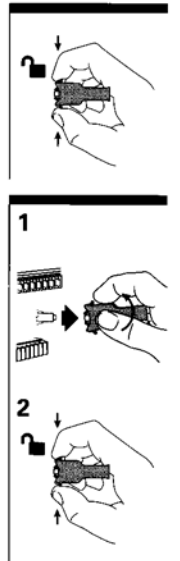
QTBI 17
Essai "enclenché"
"Locked on" Testing



* BIX is a trademark of Belden, Inc. / BIX est une marque de commerce de Belden, Inc.

BELDEN

Retrait
Removal



PO712487 Version A